

LIGHT BLASTER

FOR SHEDS

Solar Tubes vs Skylights

Solar tubes, or tubular skylights, are quite innovative in their design and provide a very good source of daylighting in your shed. They maximize the amount of sunlight they collect, while filtering out the heat and glare that traditional skylights produce.

SPECS: Material: 14 gauge aircraft aluminum
Size: 8.5" wide tubular skylight (template is included)
Unit height from rooftop: 6"
Light tube size: 3" height x 8.5" diameter
Inside Diffuser height: flush with ceiling
Box: 14"x14"x7"; 3.5 lbs (gross weight); 2.25 lbs (net weight)



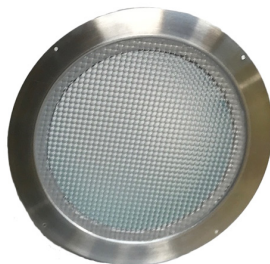
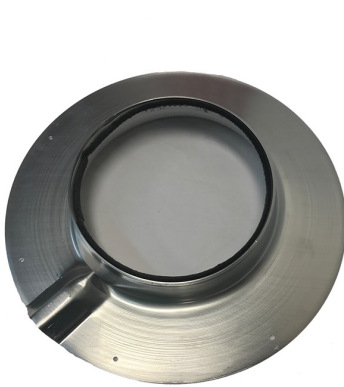
LightBlaster
Shingled Roof design
(also offered for metal roofs)

Comparison	LightBlaster Solar Tube	Traditional Skylights
Economical	Cost savings in both the unit and also in the installation.	More expensive for the unit as well as an extensive installation requirement.
Energy Efficiency	Energy Star® rated offering great, natural light with minimal heat gain and loss.	Some skylights provide ventilation by opening. The fixed ones can be a source of heat gain driving up the cost of air conditioning and heat loss increasing winter heating bills.
Attractiveness	Interior design looks much like a light fixture - very sleek. The exterior is also small and attractive from the street.	Has a larger footprint on your roof and also impacts the interior design of your home.
Quality of Light	Due to the design of the interior diffuser, the indirect light output is much more than you'd expect throughout the day. It is also a very natural light without color distortion. Doesn't fade your valuables.	Depending on the quality of the dome, the light can be discolored throwing a yellowish or grayish tone. Also, due to its design, the light's path changes with the sun and can be quite harsh at times during the day. May lead to discoloring items in its path over time.
Ease of Installation	Can be easily installed without requiring framing, drywalling, or repainting. They are installed in less than two hours. Maintenance-free design.	Require professional installation. Requires reframing, drywalling and repainting.

Solar Blaster
www.solarblasterfans.com
480.747.7097



Tube Skylights
for homes are
coming soon!



Solar LightBlaster

Solar Tubular Skylights for Sheds

