



SOLAR BLASTER



**VENTILATION
AND LIGHTING
SOLUTIONS FOR:**

**HOMES
SHEDS
CONTAINERS
GARAGES
UTILITY TRAILERS
& MORE**

BEFORE YOU INSTALL
**START
HERE!**

PLEASE PLACE THE SOLAR-POWERED VENT/FAN UNIT IN THE SUN AND CONFIRM IT WORKS **BEFORE** YOU INSTALL IT.

WE TEST EACH SOLAR PANEL & FAN BEFORE PACKING IT SECURELY FOR TRANSPORT TO YOUR DOOR. LET'S MAKE SURE NOTHING HAPPENED DURING TRANSPORT.



PLEASE REACH OUT

**Before you
return!**

PLEASE CONTACT OUR SUPPORT TEAM

EMAIL: sales@solarblasterfans.com

ONLINE: solarblasterfans.com/contact/

PHONE: 480-747-7097



WARNING

DO NOT PROCEED WITH THE INSTALLATION UNTIL YOU HAVE READ THE ENTIRE INSTRUCTIONS INCLUDING THESE WARNINGS.

Install at your own risk! Installation requires climbing ladders and working at dangerous heights. Risk of death, personal injury and property damage may result from a fall. Use extreme caution to minimize risk of accidental injury, including, but not limited to the following procedures: Avoid working on wet or slippery rooftops. Use footwear with excellent traction. Use only strong, well supported and secure ladders. Work in calm, dry weather conditions. Wear appropriate safety gear /harness while up on the roof.

ELECTRICAL HAZARD DANGER:

Watch out for existing electrical wiring and other utility wires or pipes when selecting a location for the fan. Do not install the fan where there is electrical wiring in the way.

Select another location or have a qualified electrician move the wiring to a different location.

LACERATION HAZARDS DANGER:

This fan has an unguarded fan blade. Do not use in locations which are readily accessible to people or animals. Do not let children play in an attic where this fan has been installed. Contact with this fan while in operation can result in injury.

DANGER: Keep the solar panel covered by its protective packing until the fan is mounted or at anytime the motor or fan blade are being serviced. This fan is controlled by a solar panel – it may start at any time the solar panel is exposed to sunlight. Contact with the fan blades while the fan is operating can result in injury.

WARNING: This product has sharp edges that can cut your hands. Wear canvas work gloves while handling the fan during installation.

CARBON MONOXIDE HAZARDS

DANGER: Carbon monoxide is a colorless, odorless gas that can kill. Carbon monoxide may be drawn into the house by the operation of this fan if your fuel-burning equipment is not properly maintained and vented or if you lack adequate attic venting. You should check the flue of your hot water heater and furnace to see that the pipes are intact and sealed. Request an inspection from your fuel supplier (gas company or heating oil company) or from a municipal building inspector if you have any questions about the safety of your fuel-burning equipment.

OTHER HAZARDS DANGER: For general ventilating use only. Do not use to exhaust hazardous or explosive materials or vapors. Use of this fan to exhaust hazardous, explosive or flammable materials may result in a fire or explosion, causing injury or death.

VENTILATION INFO

Our solar-powered ventilation fans are the ONLY fans that work alongside a home's passive venting system to boost its effectiveness in keeping attics cool and dry.

INTERESTING TIDBITS ABOUT ATTIC VENTILATION

No duh, hot air rises

That's right. A home's passive ventilation system is designed around the simple fact that hot air rises. That's why passive vents are installed as high on a roof as possible. Ridge venting makes the most sense as it lets air escape at the highest point on a roof.

An attic is like an oven

On a nice, sunny 90 degree day, a roof deck is 170 degrees and an attic heats to 140-150 degrees.



Worse enemies of a healthy attic

Heat and moisture are the biggest culprits to an unhealthy attic. Heat leads to roof deterioration and higher cooling costs. Moisture leads to mold, mildew, wood rot and deterioration of insulation r-value.



Air tight homes

All of a home's heat, moisture and condensation that used to escape through walls and windows are now building up under the roof!

Most neglected space

The attic is one of the most neglected spaces in a home. It's dark, difficult to access, and can easily be ignored as it is out-of-sight. A professional roofer should provide a full-service roof and attic inspection to their customers looking for proper ventilation.

Cool air in, hot air out

That is the entire key to proper attic ventilation. The goal is to maintain uniform air movement across the entire length of attic from eave to ridge.



PROPER ATTIC VENTILATION

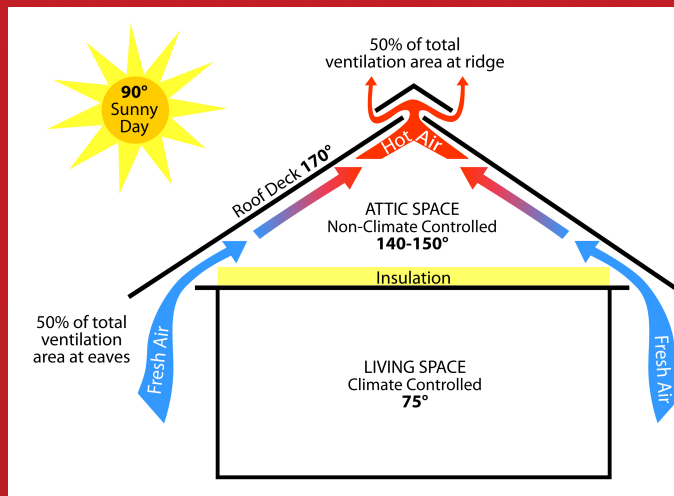
Passive venting is the industry-wide standard for proper attic ventilation. Shingle manufacturers' warranties and building codes require homes to be properly ventilated.

Attic ventilation is perhaps the most misunderstood area of roofing, and if neglected, leads to some very hideous and dangerous consequences. Ventilation is not an option; it is a necessity especially with today's air-tight homes.

A good roof design will include a balanced passive attic ventilation system. What that means is for every inch of air exhausted, there is a balanced amount of air coming in through the eave's intake vents. It also means that there is uniform eave-to-ridge air movement across the entire length of the attic. Air movement is crucial to maintaining a healthy attic.

Boosting the Passive Vent System

Once a balanced passive vent system is achieved, boosting the effectiveness of that venting system is the advantage that Solar Blaster brings to the table. Multiple solar-powered attic fans that fit right inside the



Uniform air movement across the entire expanse of roof sheathing from the eave's soffit vents to the ridge is the key to proper attic ventilation.

passive vents roofing professionals are installing on their homeowner's roofs allow these vents to remove hot and moist air even on non-windy days. We love the irony that we are utilizing the source of the heat problem, the sun, to also be the solution for removing the hot, moist air in attics.

Bigger is NOT Better

That's right. Other solar-powered attic fans on the market are not only 2-4 times more expensive, they circumvent the design and science behind the passive venting system. Remember, uniform eave-to-ridge air movement across the entire attic length is the key to proper attic ventilation. People are installing these large solar vents in addition to

their current passive vent system and that leads to problems. Large fans leave problematic hot spots in the attic. They pull air only from one spot on the roof. And if combined with other vents, they often pull air from neighboring passive vents or gable vents rather than the eave's soffit vents.

Multiple fans spaced evenly across the entire attic length will be much more effective in boosting your passive vent system. Also smaller fans require less power to start operating so the fans will work even on slightly cloudy days. *It's time to activate passive vents so the sun can start removing its own hot air!*

BENEFITS OF SOLAR BLASTER VENTILATION

- ✓ Activates passive vents to make them more efficient.
- ✓ Multiple fans promote uniform air movement across entire attic.
- ✓ Expels heat.
- ✓ Expels moisture.
- ✓ Reduces cooling costs.
- ✓ Reduces wood rot.
- ✓ Increases roof life expectancy.
- ✓ Reduces risk of mold and mildew growth.
- ✓ Keeps insulation fresh.
- ✓ Reduces attic air temp difference from outside air.
- ✓ Reduces heating costs.
- ✓ Stops heat transfer into living space.

- ✓ Healthier attic makes for a healthier home.
- ✓ Improves interior air quality.
- ✓ Easy to install.
- ✓ Less expensive than large fans.
- ✓ Uses the source of heat to be the solution at no additional cost.
- ✓ Multiple fans don't leave hot spots.
- ✓ Does not require thermostat control.
- ✓ Works even on non-windy days.
- ✓ Installs from the roof top.
- ✓ Works even on slightly cloudy days.
- ✓ Works all year around.
- ✓ Works when there is enough sun to power at least one fan.



30% TAX CREDIT

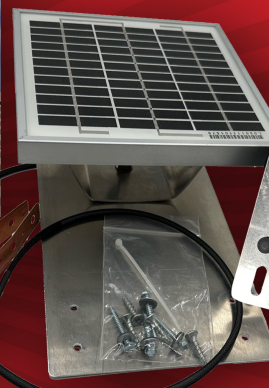
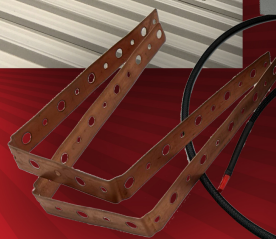
Our solar-powered attic ventilation solutions qualify for a federal 30% tax credit and additionally may even qualify for city and state credits. Visit www.dsireusa.org for a comprehensive list of all solar-related incentives and Solar Blaster's website for the Statement of Certification Tax Credit form.

SOLAR VENTILATION FOR RIDGE VENTS on Homes, Sheds, and Garage

**RIDGE
BLASTER**



**METAL
RIDGE
BLASTER**



5W/25 YR-RATED SOLAR PANEL • 50K HR-RATED/96 CFM/120MM FAN

ACCESSORIES AVAILABLE FOR RIDGEBLASTER:

- 16' Extension switch cable
- 64" Extension cable
- AC power adapter



CALL FOR
DETAILS ON
ACCESSORIES
480-747-7097

SOLAR VENTILATION FOR SHINGLED-ROOF STRUCTURES: Homes, Sheds, Garage

5W

3W

**SLANT
BLASTER**

3W

5W

**MEGA
SLANT
BLASTER**

**MEGA
SLANT
BLASTER**

BLACK

WEATHERED
BRONZE



VENTILATION FOR SHINGLED-ROOF STRUCTURES: Homes, Sheds, Garage

BLACK

GALVANIZED

BROWN

LONG-LASTING
METAL VENTS
DESIGNED BY
AN EXPERIENCED
ROOFING
CONTRACTOR
WHO KNOWS
NOT TO PUT
PLASTIC VENTS
ON TOP OF
YOUR ROOF!

STURDIER
CONVECTIVE
VENT THAN
OTHER BRANDS

UNDERSIDE

**VENT
BLASTER**

50 SQUARE INCH NET-FREE AREA • MESH NET TO KEEP PESTS OUT



SOLAR VENTILATION FOR SHINGLED-ROOF STRUCTURES: Homes, Sheds, Garage

WHITE

BLACK

GALVANIZED

BROWN

GRAY

DESIGNED BY
AN EXPERIENCED
ROOFING
CONTRACTOR
WHO KNOWS
THE IMPORTANCE
OF PROPER
VENTILATION!

**ROOF
BLASTER**

3W/25 YR-RATED SOLAR PANEL • 50K HR-RATED/35.2 CFM/80MM FAN

UNDERSIDE



SOLAR VENTILATION FOR SHINGLED-ROOF STRUCTURES: Homes, Sheds, Garage

BLACK

GALVANIZED

GRAY

WHITE

BROWN

**MEGA
ROOF
BLASTER**

5W/25 YR-RATED SOLAR PANEL • 50K HR-RATED/96 CFM/120MM FAN

UNDERSIDE

SOLAR VENTILATION FOR SHINGLED-ROOF STRUCTURES: Homes, Sheds, Garage

WHITE

GALVANIZED

BROWN

BLACK

GRAY

NEED MORE
SUN?
GET THE
MOST SUN
EXPOSURE
WITH THESE
VENTS

**MEGA
ROOF
BLASTER
ADJUSTABLE**

5W/25 YR-RATED SOLAR PANEL • 50K HR-RATED/96 CFM/120MM FAN

UNDERSIDE

DESIGNED BY
AN EXPERIENCED
ROOFING
CONTRACTOR



ADJUSTABLE SOLAR PANEL INSTRUCTIONS

Please make sure you tighten both of the adjustable arm nuts using a 11/32 wrench once you position it where it will get the most sunlight.

Do NOT overtighten.

SOLAR TUBULAR SKYLIGHT FOR HOMES & GARAGES WITH SHINGLED-ROOFS



10 INCH



14 INCH

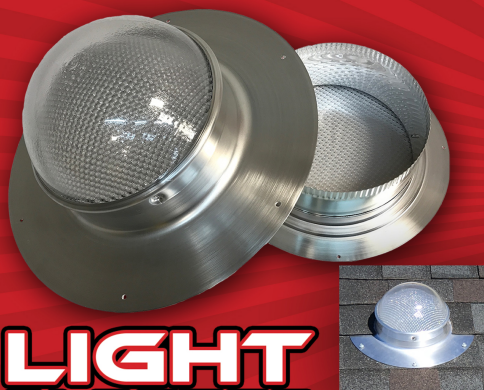


**LIGHT
BLASTER**

KIT FOR STANDARD ATTIC HEIGHTS OF 40-42" AND ROOF PITCH BETWEEN 3/12 TO 6/12

SOLAR TUBULAR SKYLIGHT FOR SHEDS & GARAGES

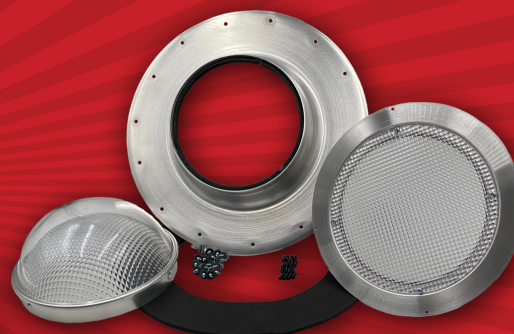
SHINGLED SHEDS



METAL ROOF SHEDS



FLAT ROOFS



SOLAR TUBULAR SKYLIGHT FOR CONEX SHIPPING/STORAGE CONTAINERS

6.5"



3.5"



INSTALLED RESULTS



**CONEX
LIGHT
BLASTER**

SOLAR VENTILATION FOR CONEX STORAGE CONTAINERS WITH 3.5" & 6.5" RIBS



SOLAR VENTILATION FOR CONEX SHIPPING CONTAINERS WITH 3.5" & 6.5" RIBS



2.5" INTAKE VENTS

Location of 2.5" intake vents on a 40' container:

Orange dot locations if installing 8 intake vents

Green dot locations if installing 4 intake vents



Install 10" from the ground (above splash point) on the cooler side

Remember: Uniform air movement is key so space the vents evenly across the entire length

Tools Needed: 2.5" hole saw bit & drill



MANUFACTURER LIMITED WARRANTY

NON-PRORATED/TRANSFERABLE

Provided that the products covered by this warranty have been installed in strict accordance with the Solar Blaster® written installation instructions and in accordance with all local codes and standards, including those pertaining to fire-rated construction, Solar Blaster® Corporation warrants to the original purchaser of the property that the parts described below are free from manufacturing defects for 5 years from the date of purchase.

PARTS COVERED

Solar RoofBlaster (Part SBRVO-xxx-xxx and SBRFB-xxx-xxx)
Solar Mega RoofBlaster (Part SBRFB-MG-xxx-xxx)
Solar Mega RoofBlaster Adjustable (Part SBRFB-MG-xxx-ADJ-xxx)
Solar RidgeBlaster (Part SBRIDGE-030)
Solar Metal RidgeBlaster (Part SBMRIDGE-033)
Solar TileBlaster (Part SBTILE-050)
Solar S-TileBlaster (Part SBSTILE-035)
Solar SlantBlaster (Part SBSLANT-xxx-xxx)
Solar Mega SlantBlaster (Part SBSLANT-MG-xxx-xxx)
Solar LightBlaster (Part SBLT-xxxx-xxx)
Solar LightBlaster for Conex (Part SBRFB-CNXX-069)
Solar RoofBlaster for Conex (Part SBRFB-CNXX-068)
Solar Mega RoofBlaster for Conex (Part SBRFB-MG-CNXX-ADJ-xxx)
Solar Mega RoofBlaster for Conex Adjustable (Part SBRFB-MG-CNXX-xxx-ADJ-xxx)
Solar VentBlaster (SBVENT-xxx-xxx)

LIMITATIONS

Solar Blaster® shall not be liable for, and this warranty does not apply to, any failure, defect or damage resulting from or connected with misuse, abuse, neglect or improper handling or storage, or installation not in strict adherence to Solar Blaster's written instructions. Solar Blaster® shall not be liable for labor costs incurred in removing the part or re-installing the replacement part. Solar Blaster® reserves the right to discontinue or modify any of its products, including color, and shall not be liable as a result of such discontinuance or modification. If Solar Blaster® replaces any part under this warranty, it may substitute parts designated by Solar Blaster® to be of comparable quality or price range in the event the product initially installed has been discontinued or modified.



WARRANTY CLAIMS

All warranty claims shall be submitted in writing via the Solar Blaster's website (www.solarblasterfans.com/warranty-claim.php) or through email. All claims must include all of the following information:

1. A copy of the original purchase invoice,
2. Purchaser's name, address, phone number, and email,
3. Description of the claimed defect.

If it is determined that parts need to be returned to Solar Blaster Corporation, they must be shipped to Solar Blaster's RMA department, freight prepaid, for evaluation. Please call 480-747-7097 for return mailing address and RMA #.

Solar Blaster Corporation reserves the right, at its discretion, to repair or replace the defective component or refund a portion of the purchase price prorated based on the balance of the warranty terms

QUESTIONS? EMAIL OR CALL US!

sales@solarblasterfans.com

solarblasterfans.com • 480.747.7097