



SOLAR RIDGEBLASTER™

Installation Instructions



Step 1: Find Truss

Find the truss where you want to install the solar panel (preferably on the south or west side of the roof) and leave off four layers of shingles.



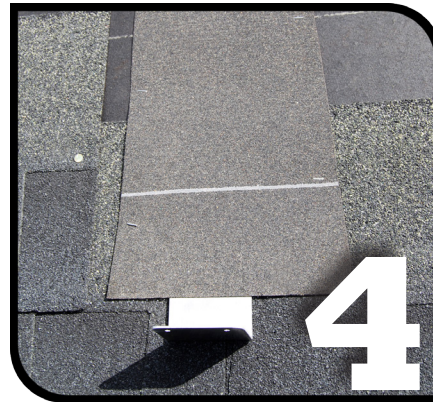
Step 2: Measure 4.5"

The bottom flashing is set into a truss 4.5" up from the bottom of the 5th course of shingles.



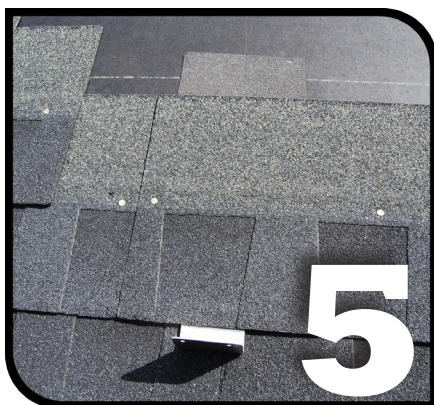
Step 3: Fasten to Truss

Using one of the three 2" screws, fasten the bottom flashing into the truss.



Step 4: Ice & Water Shield

Place a strip of ice and water shield over the bottom flashing making sure it won't show below the next layer of shingles.



Step 5: Apply Shingles

Place the next row of shingles over the bottom flashing.



Step 6: Measure 11"

Measure 11" up from the vertical lip of the bottom flashing and mark the spot making sure it is about 2" away from the truss.



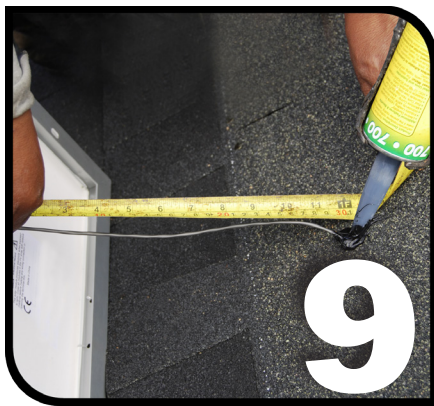
Step 7: Drill Hole

Drill a large enough hole for the wire fastener to pass through into the attic.



Step 8: Pull Out Wire

Make a slight hook at the end of one of the plumber tape strips. Then use the hook to fish out the dangling wire.



Step 9: Caulk Hole

Leave one foot of wire running from the bottom of the solar panel to the hole. Then caulk the hole. Apply one shingle layer covering the hole keeping the solar panel wire running downslope.



Step 10: Attach Panel

Attach the bottom edge of the solar panel to the vertical lip of the bottom flashing with the two 1" screws.



Step 11: Secure Flashing

Using the remaining two 2" screws, secure the upper flashing to the roof deck.



Step 12: Ice & Water Shield

Place a strip of ice and water shield over the top flashing making sure it won't show below the next layer of shingles.



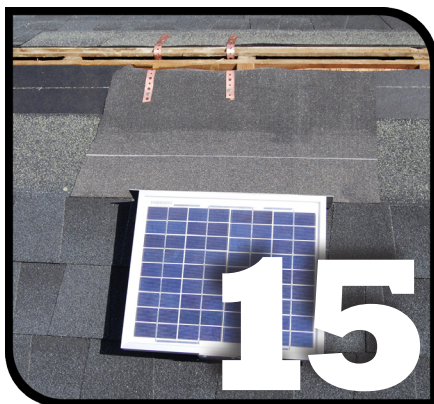
Step 13: Attach Strips

Align the center of one strip of plumber tape to the two holes on the bottom side of the RIDGEblaster fan unit. Then attach the plumber tape to the fan unit using the 1" screws.



Step 14: Insert Fans

Insert the RIDGEblaster fan unit into the ridge vent opening. If installing below a ridgeboard, you may need to pry up the adjoining decking boards in order to slide the fan unit underneath.



Step 15: Nail Down

Nail the two strips of plumber tape to both sides of the roof deck using roofing nails (not included) or 1" screws.



Step 16: Finish Up

Finish by attaching the last two rows of shingles and the ridge vent cap.

Installation videos on
SOLARBLASTERFANS.COM